

TEMPLE TOPICS

TEMPLE BETH AM 4660 SHERIDAN DRIVE WILLIAMSVILLE, NY 14221 (716) 633-8877 FAX (716) 633-8952

MAY 2011

NISAN - IYAR 5771

Join Your Temple Beth Am Family At Our Annual Mother's Day Chiavetta's Barbeque Chicken Dinner



**Sunday, May 8, 2011
11:00 AM—5:00 PM
(or until sold out)**

Adult Dinner \$9

Includes:

1/2 Chicken

Potato Salad

Cole Slaw

Roll w/Butter

Beverage (eat in only)

Children 12 & Under \$6

Includes:

1/4 Chicken

Potato Salad

Cole Slaw

Roll w/Butter

Beverage (eat in only)

Extra 1/2
Chicken
\$6

Eat In or Take Home

For details, please call the Temple office.

Pre-Orders accepted with Order Form and check. To Pre-Order: Fill out the Order Form below, and send it with your check payable to:

Temple Beth Am Sisterhood
Attn: Chiavetta's Pre-Order
4660 Sheridan Drive
Williamsville, NY 14221

Pick up your order by 4:00 PM Sunday. Stop at the cashier's table and mention that you pre-ordered. Thanks for your support!

CHIAVETTA'S ORDER FORM

Name: _____ Phone: _____

	# of meals	Price	Total
Adult Dinner	_____	\$9.00	_____
Children's Dinner	_____	\$6.00	_____
1/2 Chicken only	_____	\$6.00	_____
Total Order			\$ _____

Temple Beth Am Bingo is Back! Join in the Action!



May Dates:

Monday, May 2nd

Monday, May 9th

Monday, May 16th

Monday, May 23rd

June Dates:

Monday, June 6th

Monday, June 13th

Monday, June 20th

Monday, June 27th

Doors Open at 6:30 PM

Games Start at 7:30 PM

All money raised helps out your Temple...join in the fun!

**Temple Beth Am
56th Annual
Congregational Meeting
Tuesday, May 17, 2011
7:30 PM
TBA Social Hall**

Upcoming Services May 2011

Parashat Emor
Leviticus 21:1 – 24:23

Friday, May 6, 2011
6:30 PM Erev Shabbat Family Service

Saturday, May 7, 2011
9:00 AM Torah Study

Parashat Behar
Leviticus 25:1 – 26:2

Friday, May 13, 2011
7:30 PM Erev Shabbat Service

Saturday, May 14, 2011
9:00 AM Torah Study
10:30 AM Shabbat Morning Service
Bar Mitzvah of Noah Rosenthal
4:00 PM Grades 8 – 12 Havdalah
Off – site

Parashat Behukotai
Leviticus 26:3 – 27:34

Friday, May 20, 2011
7:30 PM Sisterhood
Erev Shabbat Service

Saturday, May 21, 2011
9:00 AM Torah Study

Parashat Bamidbar
Numbers 1:1 – 4:20

Friday, May 27, 2011
7:30 PM Erev Shabbat Service

Saturday, May 28, 2011
9:00 AM Torah Study
10:30 AM Shabbat Morning Service
Bar Mitzvah of Chad Draman

**You don't have to just be celebrating
a Bar/Bat Mitzvah to sponsor an
Oneg! Celebrate any Simcha!
Call Rick Ellis at 633-8877
for all of the details.**

From the Desk of Rabbi Irwin A. Tanenbaum, D.D.

Dear Friends,

Below is an article that appeared in the "JTNews – Guide to Jewish Washington [State]." I rarely reprint articles; this one is worth it. Talk to your friends about this; share it with unaffiliated Jews whom you know. It is an amazing offer made by my classmate and old friend, Rabbi James L. Mirel (reprinted with permission). Call him for your money (206-323-7674)! Help keep TBA active.

B'Shalom,

Rabbi Irwin A. Tanenbaum, D.D.

**An offer you can't
(and shouldn't) refuse.**
Rabbi James L. Mirel • Temple B'nai Torah

Dear JTNews reader:

This column is addressed to those who are "unaffiliated." The rest of you are welcome to read it as well. The word "unaffiliated" in this context means anyone in the Jewish community who is not a member of a synagogue. According to estimates...this [is]...over 50 percent of the Jews in America. I am going to make you an offer you can't (shouldn't) refuse...: I will personally pay the first three months of your annual dues if you join a synagogue — any synagogue — before next Rosh Hashanah* (details...found at end of this letter).

[This]... will be a reasoned and reasonable argument (in the philosophical meaning of that word) of why you should join a synagogue, using selected quotations from the Mishna tractate...Pirke Avot (the 'Chapters of the Ancestors'...).

"Find yourself a rabbi." (Avot 1:16)

Every Jew needs a rabbi to call his or her own....someone who will be your mentor, teacher, confidant, and lifecycle officiant. ... [T]here is no substitute for having an ongo-



ing relationship with your rabbi — someone who knows you intimately and has a true sense of who you are. In America, the best way to "acquire" such a mentor is through synagogue affiliation.

During the course of a year I officiate at 20 or more funerals. If a Jew dies and needs a rabbi, if I can I will be there... However, there is a world of difference when I preside at the funeral of a member ...and when I preside at the grave of someone I never knew. My intentions are the same, but the depth of connection is worlds apart.

But it is not only at important lifecycle events that having your own rabbi is crucial. To know there is someone who will listen to you day in and day out, and with whom you have an on-going relationship, is life affirming. To me, this is one of the most compelling reasons to be affiliated.

"All those engaged in the life of the community...will prosper." (Avot 2:2)

This statement by Rabban Gamliel... may appeal to the more selfish reasons for being affiliated... Not all motives need to be altruistic.

Synagogue affiliation is a formula for success... You will prosper materially through networking and increased connections. But you will also prosper emotionally and spiritually through a sense of belonging and the ego boost being part of something larger than yourself brings. I would challenge a[ny] sociologist...to conduct a well-designed study, and I would bet that affiliated Jews are statistically more successful and happier than those who are not.

Being engaged in the life of a congregation is a path to success and the more involved you are...the greater your success.

(continued on page 5)

From Cantor Sharon Eve Colbert, M.J.S.M.

It is Spring. The earth's potential for growth here in Western New York is a'bustin' out all over! The possibilities of fresh flowers, green lawns, warm breezy evenings and refreshing strolls or jogs along your favorite paths are inviting you to come out and play.

Every Bar or Bat Mitzvah who has come through their B'nei Mitzvah knows the phrase Jewish responsibility. It has a burdensome sound. Eyes glaze over, trepidation sets in. The difference between Jewish responsibility – an extrinsic force vs. human potential – an intrinsic self-awareness, is what I try to bring to the surface. Not one of the B'nei Mitzvah has asked what is meant by responsibility. But, when we talk about human potential, that's when I see the wheels start to turn.

We can feel and touch the seeds that give birth to all green, flowery, woody things. But, the seeds of potential can't be touched by the senses. It is an urge to contribute in a meaningful way to Tikkun Olam – to heal the world. This is a central tenet of Reform Judaism. The potential to do so lives as a seed in each and every one of us.

Remember the song written by David Mallet – “The Garden Song?” It was sung by John Denver, Peter Paul and Mary, and Arlo Guthrie, among many others. It starts off “*Inch by inch, row by row...*” and goes on in another stanza: “*Man is made from dreams and bones, feel the need to grow my own...*” That's the urge – go for it! It'll put a spring in your step!

Save the Date for Sisterhood's Annual Donors Luncheon Sunday, June 5, 2011 11:00 AM

Watch your mail for your invitation.
Details will be included in the mailing.
If you have any questions or would like to volunteer
to help, please contact Julia Cohan at 688-6890
or email her at mgtchoan@buffalo.edu.

Celebrate Your Anniversary in June!



A Marriage Re-Consecration event will take place during Erev Shabbat Services on June 17th at 7:30 PM. Couples celebrating a “special” anniversary during the year 2011, starting with the 10th year and in five-year increments until the 50th, and every year past 50, are invited to receive blessings on the Bimah with Rabbi Tanenbaum and Cantor Colbert. This joyful way to recommit to the sacred bond of marriage is a most uplifting experience. Please provide your name and anniversary number to Stan and Rella Corris at 636-1541 or via email at scorris@juno.com.

Temple Beth Am

Rabbi

Irwin A. Tanenbaum, D.D.

Cantor

Sharon Eve Colbert, M.J.S.M.

Executive Director

Richard A. Ellis

Director of Education

Sharon Malek Jacobs

BATY Advisors

Caroline Coonly, Michael Berger,

Liz Messer

Junior Youth Group Advisors

Faith Chvala, Michael Bluman,

Nancy Millman

President

Todd Sugarman

V.P. Administration

Liz Messer

V.P. Membership

Michael Millman

V.P. Worship

Judy Henn

V.P. Education

Heidi Neu

V.P. Finance

Joseph Glickman

Secretary

Shari Jo Reich

Treasurer

Jay Mesnekoff

Immediate Past President

David Berghash

Sisterhood President

Julia Cohan

Men's Group President

Jan Berg

BATY President

Josh Waykoff

Topics Editor

Sharlene Vogler

Temple Office Telephone

633-8877

633-8878 (after hours and weekends)

Temple Office Fax

633-8952

Religious School Telephone

633-8953

Temple Beth Am is also on facebook.



July 2011 Temple Topics Deadline

The deadline for articles to be submitted for inclusion in the **July 2011** issue of Temple Topics is **May 21, 2011**. Please submit articles to the editor at sbadback@verizon.net.

From Sharon Malek Jacobs, Director of Education

Shavuot is one of the three pilgrimage festivals. (The others are Sukkot and Passover.) Shavuot celebrates the giving of the Ten Commandments to the Jews at the foot of Mount Sinai in the desert. There is a midrash that teaches that this experience was so spectacular that the desert bloomed with greenery and flowers.

Jews in Eastern Europe created beautiful papercuts of flowers to decorate their homes. Others like to have fresh flowers in their homes for this holiday. Dairy foods like blintzes and cheesecake are traditionally eaten for a variety of reasons. The reason I like best is that the Torah is like milk and honey. Two challahs are baked, and serve to remind us of the two tablets.

Last year, Mrs. Judy Henn, the fourth grade teacher, gave me this acrostic written

by one of her students that captures the essence of this holiday.

Shavuot
Hard work (waiting for Moses)
Accompanying Moses
Vowing to follow the commandments
Up and down the mountain
Omer
Tablets

While the Decalogue is the core of our teaching, there are 603 other commandments in the Torah, which are to be observed as well. Many of these are acts of loving kindness or *gimilut chasadim*, which is one of the strands in the CHAI Curriculum that our school embraced this year.

Mrs. Zions, our 6th and 7th grade CHAI teacher, shared the following vignette with

me. "During the time dedicated to current events, the 7th graders were eager to discuss the catastrophe in Japan. Mrs. Zions asked the students to link this topic with *gimilut chasadim*, as well as with a past CHAI curriculum topic of Life Cycle events and death. *Gimilut chasadim* was addressed as the students talked about ways the Japanese are helping one another, as well as ways the world at large is helping-neighbors helping neighbors; strangers sending tzedakah; volunteers and professionals helping in the search for missing people and with the clean-up. We then talked about how Japanese Buddhists grieve and pay respects to their ancestors and compared this to Jewish customs." Though the circumstances were so sad, I was proud of the integration of this curriculum into our students' daily lives.

Important Religious School Dates

Sunday, May 8th Ganainu 9:00 AM
Kehilah closing session 9:00 AM

Tuesday, May 10th Last Tuesday of Religious School

Sunday, May 15th Grade 8 Giborim closing session
9:00 AM - Dress for an outdoor
(messy) Mitzvah Project

Last Sunday of Religious School

This month, registration for Ganainu through high school will be mailed to current Religious School Families. Please let us know of any families with potential students so that we can offer them our Early Bird Registration opportunity.

Kudos, Todah Rabah, Thank You to Parent Council and Chairs, Betsy Zappia and Micky Farber, and their committee, for the successful Girls Night Out Shopping Extravaganza. The proceeds will further programming in our school.

Family Erev Shabbat Service Friday, May 6th at 6:30 PM

Thanks to the Parent Council, and especially to Amanda Usen, for making an abundant amount of the most delicious Hamentaschen.

Also, thank you to the Parent Council and Room Parents for their help with our Model Seders.

Attention all Grade 6 & 7 Students and their Parents:

Special Yom Hashoah Program
to be held at Temple Beth Tzedek

Sunday, May 1st - 9:15 to 10:15 AM

You will have the opportunity to hear first-person testimony of these tumultuous years. After this program, stay for the Community Commemoration of Holocaust Memorial Day - Yom Hashoah.

**** This is in lieu of Religious School for Grades 6 & 7****

Rabbi's Article *(continued from page 2)*

"Do His (God's) will as if it were yours, so that He will do your will as if it were His." (Avot 2:4)

I am [not] so foolish [as] to suggest that God wants you to be a member of a synagogue and that God will reward you for doing so... But this is my belief: The world/fate operates on mystical principles that defy our understanding. One does not need to evoke the Hindu notion of karma to believe that all things are connected in ways that defy our rational understanding. Put another way, prayers may not be answered directly, but why take a chance? Judaism is a tradition that is open to all kinds of connections. Think about it.

"Do not cut yourself off from the community." (Avot 2:5)

This oft-quoted aphorism of ... Hillel is the ultimate argument for affiliation. To be a Jew is to be part of the community. There are, of course, many other ways to be part of the Jewish community... I speak in this context not as a rabbi, but as a Jew raised from day one in a close-knit synagogue... I can state unequivocally that my life was shaped in a wonderful way by my rabbi, my congregation, my friends and my teachers. Every Jewish child deserves such an experience. Your child/grandchild deserves such an experience. This is why I am making this offer you "can't" refuse.

So now the details and the caveats: Do some research and select a congregation right for you: Reform, Conservative, Orthodox, Reconstructionist, Renewal, meditative. (Caveat #1: I exclude so-called Messianic synagogues — another topic for another day.) After you are sure it is one you would like to try, make the connections, appointments, paperwork that will allow you to join for a year, sign on, and then bring a piece of paper to me, in person, stating the terms/costs, etc... We will sit down and talk about your choice for a few minutes and I will write you a check for three months worth of dues (made out to the synagogue — I will get the tax deduction, it seems only fair).... try it for an entire year and then report back to me by phone or e-mail....

... I believe in this passionately and I strive to be like Aaron: "Loving my fellow beings and bringing them closer to Torah" (Avot 1:12).

Sincerely,
Rabbi Mirel

Thank You to Bagel Jays...

for the lovely challahs you donate
to our Temple Beth Am Family
each and every Shabbat.



Help our Youth Group



Green the World.

Join with BATY and recycle your newspapers, old mail, magazines, phone books and paper.



Attention Temple Members!

Don't forget to save and drop off your "pop tabs" from beverage and other cans in the box in the Temple office to benefit the Ronald McDonald House.



Join us for Israeli Folk Dancing with Dorothy Lewis

Saturday, May 21st
7:00 PM - 9:00 PM in the Social Hall

**Cost: \$10.00 per Adult
\$8.00 per Youth**

For more information, please call
Linda Bergman at 741-4721.

(No partner or experience needed.)



Gift Shop Hours during Religious School:
Sundays: 9:00 AM to 12:00 Noon
Tuesdays: 4:15 PM to 6:15 PM
By appointment, call 634-3504.

Hosted by Daniel Kester

For more information, call 536-5628, or email daniel@thekesters.net.
Also see his website at www.thekesters.net/Genealogy.

Sisterhood Pot Luck Dinner and Erev Shabbat Service to be held on May 20, 2011.

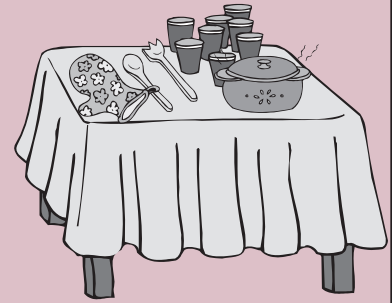
Sisterhood members and their families are invited to a Pot Luck Dinner at 6:00 PM on May 20th. Sisterhood will be providing turkey, rolls and beverages. You supply the rest as follows:

Last names starting with A-L should bring a salad or appetizer.

Last names starting with M-Z should bring a side dish.

Please RSVP to Julia Cohan at 688-6890, or at mgtcohan@buffalo.edu by May 10th with the number of people from your family who will be attending the dinner.

The Sisterhood Erev Shabbat Service will follow beginning at 7:30 PM. If you would like to participate by reading a passage on the Bimah, please contact Judy Henn at 691-8058, or at jeh213@aol.com.



Rella Corris (left) and Julia Cohan mix up the spinach and cheese for the Matzo Spinach Lasagna.



From left, Sima Lewis, Diane Symons, Tobi Horwitz and Carol Kleban scoop the Peach Pudding into baking pans.

Sisterhood Lunch and Learn



Janine Greene makes the tomato sauce for the Lasagna.



Two of the finished dishes: the 7-Layer Matzo Cake (left) and the Peach Pudding.

May Donations *(those received by March 21, 2011)*

The Endowment Fund

In Memory of:

Donald Adler, by Marion Cohn
Aaron Baker, by Chris and Esther Donner
Patricia Barone, by Stanley Polonski
Minnie Engel, by Bernie Engel
Hubert A. Gerstman, by Lillian Gerstman and
Jen Innerfield
Barbara Hayman, by Wendy Weisberg
Robert Melzer, by Laurie and Bert Dohn
Barbara Joyce Mindell, by Melva Mogerman and Jeffrey,
Richard, Mike and John Mogerman
Anna Pritikin, by
Stanley and Carolee Arbeit
Frances Cohen
Laurie and Bert Dohn
Lillian Gerstman
Melva Mogerman
Elaine and Jerry Schweitzer
Sophie Ross, by Marilyn Levin
Dorothy Wolf, by Faye Maxick

In Honor of:

Dr. Stanley Arbeit, on his Special Birthday, by
Hallie Block
Marion Tasman and Mel Davis

The Rabbi's Discretionary Fund

In Memory of:

Marvin Fox, by Eric Fox
Barbara Hayman, with Appreciation, by Ginny Ellis
Norman Richards Hoffman, by Patty and Randy Simonson
Ida Lee Kellick, by Henry and Lynn Ullman

In Honor of:

Marta Braiterman, for a Complete Recovery, by
Ilene Scheib and Sally Scheib

The Cantor's Discretionary Fund

In Memory of:

Joseph Goldberg and Sarah Goldberg, by
Sharon E. Colbert
Barbara Hayman, with Appreciation, by Ginny Ellis
Anna Pritikin, by Janeen Greene and Joe Morris
Ruth Winer, by Janeen Greene

The Executive Director's Discretionary Fund

In Memory of:

Barbara Hayman, by
Fred and Elaine Bock
Mary Ann Ellis
Rick Ellis
Delores Frankel
George and Anne Gardner
Harvey and Myra Horowitz
Steven and Sharon Jacobs and Family
Jennie Pohl
Jack and Marcy Snyder
Dolly and James Wake
Laura Yellen
Henry Pohl, Fanny Ross, Edith Rosen, by Jennie Pohl
Anna Pritikin, by
Ginny and Mac Ellis
Rick Ellis
Jacob Sohinki, by Jennie Pohl

The Educator's Discretionary Fund

In Memory of:

Barbara Hayman, by Dorothy Shaktman
Mark H. Yellen, by Adam Yellen

In Honor of:

Barbara Brogadir, on her Special Birthday, by
Sharon and Steven Jacobs

The Building Fund

In Memory of:

Bessie Gross, by Jack Helfant

The Capital Repair Fund

In Memory of:

Isidor Zimmerman, by Nathan V. Zimmerman

The Caring Committee Fund

In Memory of:

Anna Pritikin, by Paul and Lily Bink

The Cantor Susan Wehle Memorial Fund

In Memory of:

Gertrude Swartz, by Chris and Esther Donner

The Anne Bernstein Education Fund

In Honor of:

Alan Bernstein, for a Speedy Recovery, by
Ellen Bernstein and Family
Penny Shurman, for many "Get Well" wishes, by
Ellen and Alan Bernstein
Hane Westerman, by Maurice and Doris Spector

The Landscaping Fund

In Memory of:

Donald Adler, by the Sisterhood of Temple Beth Am
Barbara Hayman, by the Sisterhood of Temple Beth Am
Ruth Miller, by
Susan Adelman, Cheryl and Arthur Orlick,
Noreen and Orin Tobbe, Joan and Sam Weissman,
Lindsey and Michael Weissman,
David and Jeffrey Weissman, Beth and Bruce Tubin,
Suzanne Barney and Family,
Deny and Alisa Adelman, Alyson and Steven Wells,
Linda and Sid Weiss, Barbara and Lee Singer,
Doris and Richard Usen, Tania and Ronie Nudelman,
Roz and Herb Weiss, Amy Montague and Family,
Iris and Ken Weinstein
Barbara Joyce Mindell, by
The Sisterhood of Temple Beth Am
Sarra Polonskaya, by the Sisterhood of Temple Beth Am

The Library Fund

In Memory of:

Barbara Joyce Mindell, by Rabbi Donald Heskins

In Honor of:

Marta Braiterman, for a Complete Recovery, by
The Sisterhood of Temple Beth Am

The Edith and Joel L. Cohen Prayer Book Fund

In Memory of:

Norman Stone, by Barbara and Saul Henechowitz

The Sanctuary Fund

In Memory of:

Hal Roberts, by Lawrence and Joyce Train,
Robert and Joann Capwell

(continued on page 9)

May Donations *(continued from page 8)*

The Sisterhood Fund

In Memory of:

Sarra Polonskaya, by Victoria Biligovskaya

The Thanksgiving Baskets Fund

In Memory of:

Sam J. Camhi, by Alan Camhi and Family

The Yahrzeit Fund

In Memory of:

Edith H. and Isadore J. Liebeskind, by Helen L. Hersch

David Sadoff, by Ruth Sadoff

Jerauld Wisbaum, by Kim and Clark Trow

The Rabbi Daniel E. Kerman Memorial Fund

In Memory of:

Sadye Ann Cohen, by Eve Lyn Fertig

The Dr. Barnett A. Slepian Memorial Fund

In Memory of:

Joe Ader, by Sonny and Bert Breitbart

The Jane Oved Memorial Fund

In Memory of:

Charles R. Sandler, by Gloria Sandler

The Marshall L. Glickman Memorial Fund

In Memory of:

Barbara Hayman, by Jane L. Ruslander

* * *

NOTE: *Writing a separate check for each donation allows us to credit the full amount of your contribution to the fund you specify for your gift.*

Greetings From Sisterhood, by Julia Cohan

More than once this year, I have heard that Sisterhood is exclusive. We are a clique. Outsiders are unwelcome in the inner sanctum. Why? People are discouraged from attending meetings. For the record, this is an open invitation. Everyone is welcome.

From my viewpoint, a very few members are working overtime to carry the load of the entire group. Temple Beth Am counts on Sisterhood to raise funds by running several events every year. The same people volunteer over and over.

Stealing from the infamous words of President Kennedy, "Ask not what Sisterhood can do for you, ask what you can do for Sisterhood." If you want Sisterhood to be different, show up, shape it. If you want a friendlier Sisterhood, come and make it friendlier. If you want Sisterhood to offer programs that you want to attend, come to a meeting, suggest a program, and make it happen. Believe me when I say, everyone is welcome.

Sisterhood is anything but exclusive. We are women who band together to share our energy with other women, in support of our Temple, our community and each other. Everyone is welcome. When I began my term as President, I asked you all to pick at least one event to attend. I realize now that I asked for way too little. If you want more from Sisterhood, you must be prepared to give more of yourself. You will be glad you did. Really, you will.

TBA Men's Group

The TBA Men's Group will have a regularly scheduled meeting on the 3rd Sunday of the month – May 15th – at 9:00 AM. Please join us for the brotherhood that we offer. Items for discussion during this meeting will involve Temple Bingo, and the opportunities of fellowship and brotherhood that is offered by the group.

The special "Pen Turning Class," which was to be held this month, will have to be rescheduled. We will let you know when the class will be offered in the future.

The Men's Group authorized \$2,000 towards various expenses for the Temple, including a new digital audio system, additional speakers in the Social Hall, and a projection screen in the Open Area, plus money to cover some ongoing expenses. The Men's Group also authorized \$2,500 towards a new digital control board for the Bingo program.

Please join us and lend your voice to our choirs. Breakfast will be available. Please RSVP to Jan Berg at MensGroup@roadrunner.com so he can provide breakfast for all members.

The Men's Health Project

Please join us on May 15th for our next lecture in the series on Diabetes. The lecture will be given by Joe Glickman and Dan Kester. The first lecture in the series given by Joe and Dan was very informative. Attendance at the lecture series needs to be kept up so that the Temple may benefit from the \$1,000 stipend that has been offered to us.

Dan and Joe have invested a lot of personal time and effort in this program, and they should be commended on their actions. Please support them and the Temple.

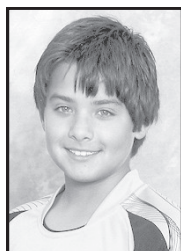
The lecture will start at 10:00 AM. Breakfast will be served, and the lecture is presented at no charge. All are welcome regardless of gender, age or faith. Please RSVP to Jan Berg at Menshealth@roadrunner.com. Remember that in knowledge is power, and that you are your own best medical advocate.



Between the Covers with Jewish Authors

Our book group is taking a pause during the month of May (no May meeting), but will hold its final meeting for this season on Tuesday, June 21st at 7:30 PM. At that time, Grace Bluestone will lead a poetry reading/discussion selected from The Dream of the Poem: Hebrew Poetry from Muslim and Christian Spain 950-1492. This book is newly translated, with notes by Peter Cole (2007). We will HAND OUT copies, in translation, of Grace's selected poems at the June meeting. You will not need to buy or pre-read this weighty volume of poetry. Circle your calendars for June 21st. We all enjoy Grace's leadership, and the chance to discover Jewish poetry from a vibrant time in Jewish history.

Mazel Tov to our Bar Mitzvah and His Family



Noah Rosenthal
May 14th, 10:30 AM

In Memoriam

Our Temple extends its sympathy
to the families of:

Donald Adler
Joseph M. Bink
Joseph Weiss

Cell Phones Now Recycled at Temple Beth Am for BATY

*Don't toss out your
used cell phone or
accessories. Bring
them to Temple for
recycling!*



May 2011 Memorial Anniversaries

May 6, 2011

Richard Abraham, Constance Alfieri, Daniel Breitbart, Doris Lenobel Brody, Joseph A. Carr, Abraham Cohn, Shirley Colbert, Hilda Cooper, Miriam Corris, Esther Dorris, Ellie Dorskind, Elizabeth P. Eisner, Harold Elsner, Leonard Epstein, John Feder, Mona Feder, Jerome S. Fink, George Glantz, Judy Goldberg, Anna Guttman, Maurice Helfant, Ida Lawrence, Clara Snitzer Leffler, Harry Perlmutter, Anna Rosenthal, Rita Bloomberg Roth, John Schierlitz, Martha Schneider, Minnie Schreiber, Jacob Schwarzberg, Samuel Slepian, Sadie Spiegler, Walter Strauss, Arnold Sulcov, Benjamin Taylor, Samuel Treger, Aron Tsypenyuk, Harry N. Tuchman, Lusik Verlotski, Edy Weinbaum, Yolan Weiner.

May 13, 2011

Samuel Axlerod, Edwin Brockman, Theodore Bronk, David Fredrick, Helene Frost, Tillie Gafter, Patricia Gilbert Cole, Larry A. Glaser, Ethel Goldman, Barney Kaufman, Jenö Klein, Solomon Leberman, Samuel Moscato, Russell Nelson, Theresa Pascuzzi, Ethel Paull, Ruth E. Pugash, Miriam Schulman, Sidney Schulman, Fannie Slutsky, Benjamin Smallen, Irving Tomchin, Saul Wabnick, Nancy Wohl.

May 20, 2011

Maurice Baker, Irving Brutman, Robert I. Cohen, Samuel Cohen, David Gabin, Sophia Goldfarb, Helene Levine Horwitz, Milton Kanner, Philip Koren, Frank Kranitz, Mary Kranitz, Albert Krawll, Harry Lettman, Barry Lipsitz, Rachel Littenberg, Betty Reizman, Phoebe Rose, Percy Roth, Goldie J. Sachs, Mathew Sandler, Seymour Schonfeld, Harold Schultz, Donna Seeberger, Sam Segal, Sylvia Snitzer, Rose Sohinki, Reha Specter, Sophie Treger, Edward Wapniak.

May 27, 2011

Adolf Abraham, Bessie Baker, Jacob Baker, Robert Baltuch, Shirley C. Bronstein, Isadore Drach, Jacob M. Feldman, Donald Fox, Rita Gerson, Fannie Goldberg, Anne Greenspon, Carl Haber, Harold Heskins, Ann Kaufman, Baby Klein, Dorothy Klein, Kaitlin Klein, Dr. Charles Konell, Meyer Korus, Rose Kravatz, Rose Pikoff, David Robbins, George Rubin, Richard Schieff, Dr. Paul Slepian, Alvin Solomons, Ralph B. Tufts, Mark H. Yellen, Marjorie Brutman Zimmet.

The Parkinson's Group will not be holding any meetings in the months of May and June. Meetings will resume in July 2011.



A Family of Families
Temple Beth Am
 4660 Sheridan Drive
 Williamsville, New York 14221

Non-Profit Org.
 U.S. Postage
PAID
 Permit No. 3870
 Buffalo, New York

<div> <div>May 2011</div> <div>For the most current information, visit our web site www.BethAmBuffalo.org/calendartba.html</div> <div>Nisan - Iyar 5771</div> </div>						
Sunday	Monday	Tuesday	Wednesday	Thursday	Friday	Saturday
¹ 9:00 AM Religious School 9:15 AM Yom Hashoah Program for Grades 6-7 and Parents at Temple Beth Tzedek Yom Hashoah	² OFFICE CLOSED <div>Our calendar is prepared more than one month in advance of publication and is subject to change.</div> 7:30 PM BINGO	³ 4:30 PM Religious School 4:30 PM BJE Alternative Confirmation Program 7:00 PM Executive Committee Meeting	⁴ 11:30 AM Sisterhood Bible Study 7:30 PM H.S.J.S. Graduation	⁵ 6:00 PM Knitting Group	⁶ Noon: Communication Committee Meeting 6:30 PM Erev Shabbat Family Service	⁷ 9:00 AM Torah Study
⁸ 9:00 AM Religious School 9:00 AM Ganainu 9:00 AM Kehilah Program 11:00 AM Chiavetta's Mother's Day Barbeque Chicken Dinner	⁹ OFFICE CLOSED 7:30 PM BINGO	¹⁰ 4:30 PM Religious School Last Tuesday	¹¹ 11:30 AM Sisterhood Bible Study	¹² 7:00 PM Sisterhood Meeting	¹³ 9:30 AM Vus Tut Sich? 7:30 PM Erev Shabbat Service	¹⁴ 9:00 AM Torah Study 10:30 AM Shabbat Morning Service Bar Mitzvah of Noah Rosenthal 4:00 PM Grades 8 to 12 Havdalah Off-site
¹⁵ 9:00 AM Religious School Last Day 9:00 AM Grade 8 Giborim 9:00 AM Men's Group Meeting 10:00 AM Men's Health Project	¹⁶ OFFICE CLOSED 7:30 PM BINGO	¹⁷ 7:00 PM Board of Trustees Meeting 7:30 PM Annual Congregational Meeting	¹⁸ 11:30 AM Sisterhood Bible Study	¹⁹ 6:00 PM Sisterhood Pot Luck Dinner 7:30 PM Sisterhood Erev Shabbat Service	²⁰ 7:00 PM Israeli Dancing	²¹ 9:00 AM Torah Study Temple Topics Deadline
²²	²³ OFFICE CLOSED 7:30 PM BINGO	²⁴ 7:00 PM Adult Education Jewish Genealogy	²⁵ 11:30 AM Sisterhood Bible Study	²⁶	²⁷ 9:30 AM Vus Tut Sich? 7:30 PM Erev Shabbat Service	²⁸ 9:00 AM Torah Study
²⁹	³⁰ OFFICE CLOSED NO BINGO	³¹	June 1 11:30 AM Sisterhood Bible Study	June 2	June 3 6:30 PM Erev Shabbat Family Service	June 4 9:00 AM Torah Study 10:30 AM Shabbat Morning Service Bat Mitzvah of Erin Fabian
June 5 11:00 AM Sisterhood Donors Luncheon	June 6 OFFICE CLOSED 7:30 PM BINGO	June 7 7:00 PM Executive Committee Meeting Erev Shavuot	June 8 10:30 AM Shavuot Joint Service at Havurah	June 9 6:00 PM Knitting Group	June 10 9:30 AM Vus Tut Sich? 7:30 PM Joint Erev Shabbat Confirmation Service at Temple Sinai No service at Temple Beth Am	June 11 9:00 AM Torah Study 10:30 AM Shabbat Morning Service Bat Mitzvah of Julia Helfman